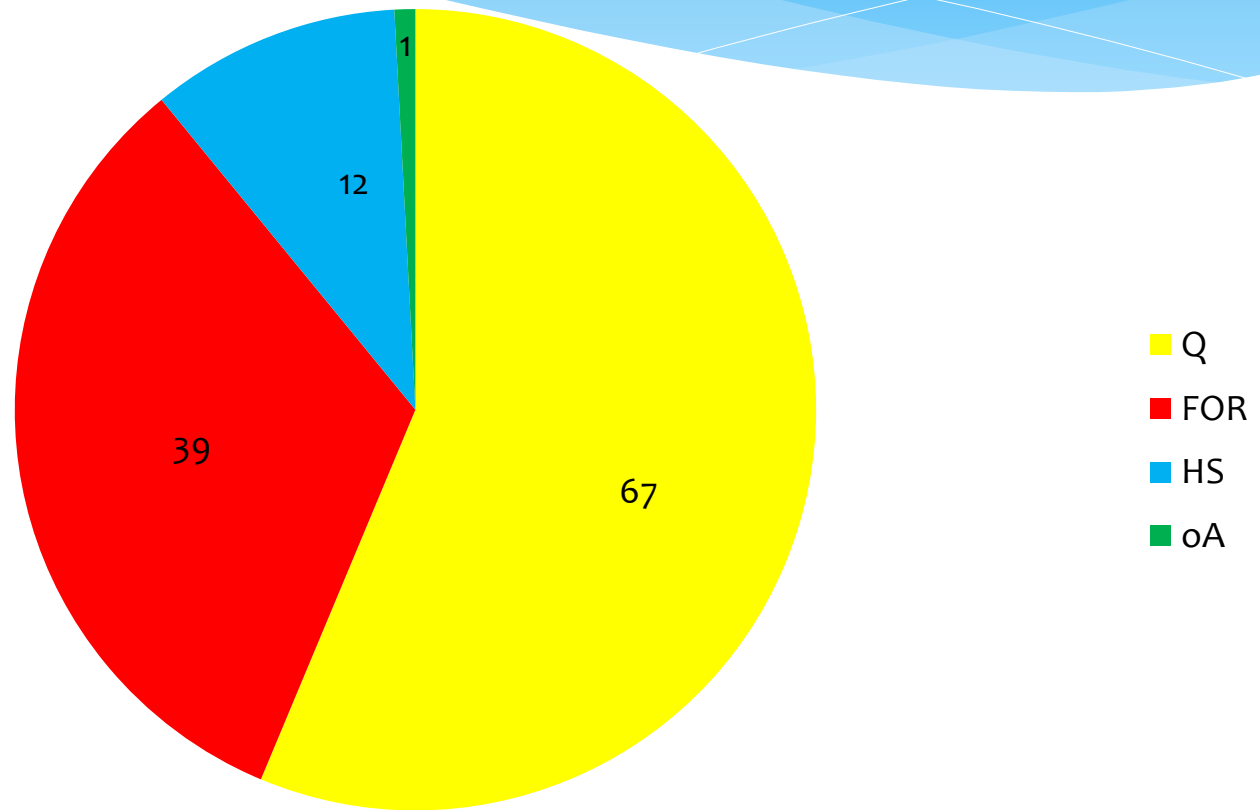




ZP10 2012 an der ALG

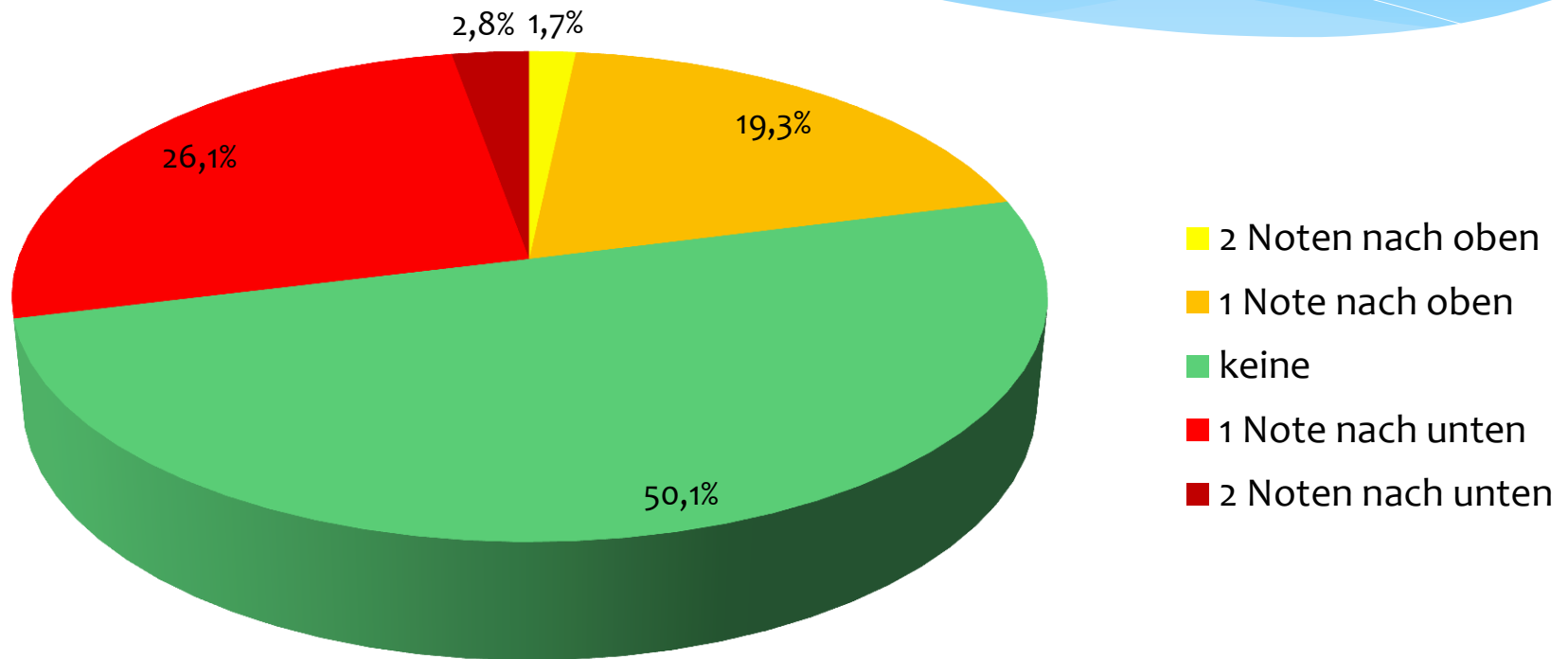
# Die erreichten Abschlüsse



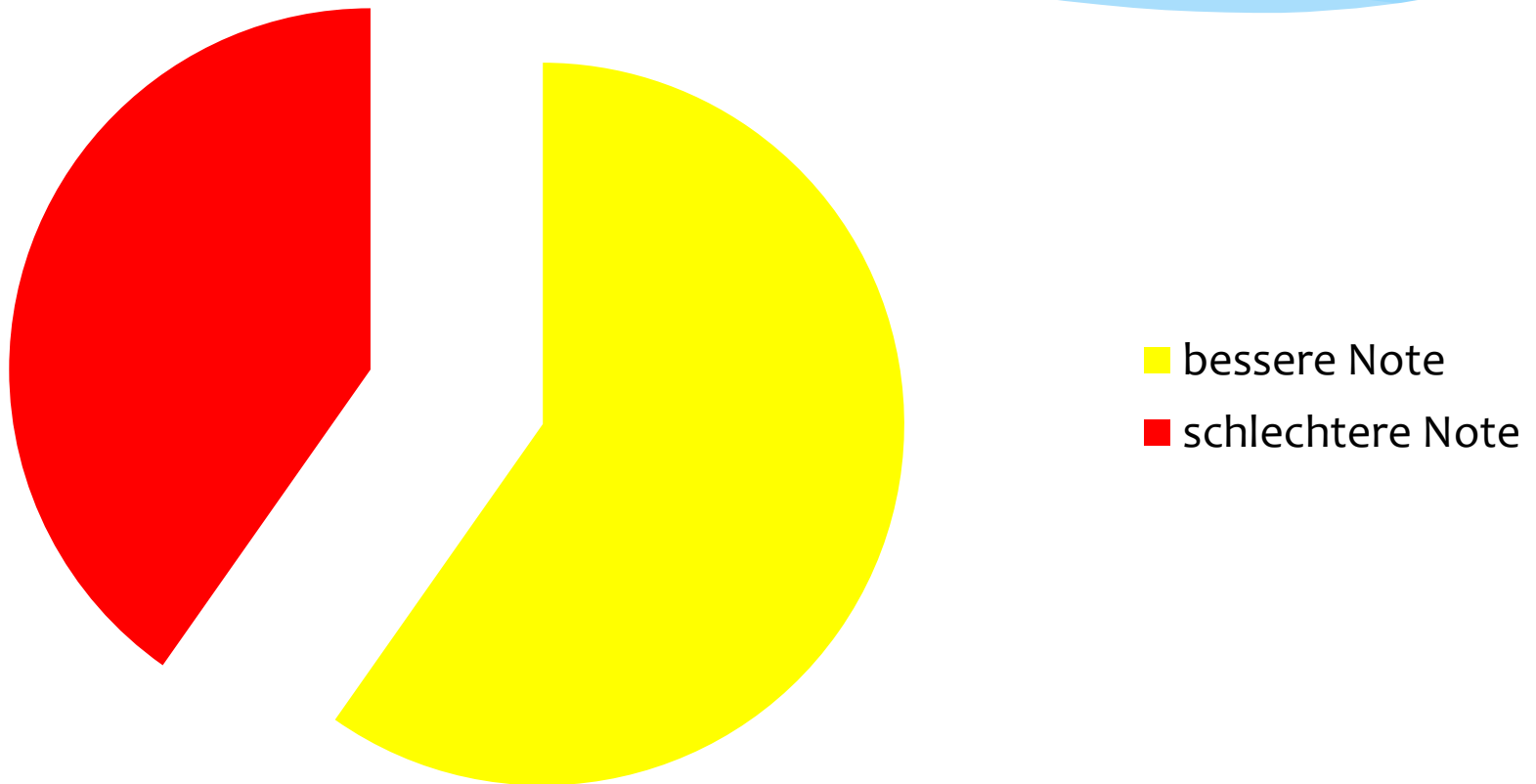
# Bedeutung der ZP10 für die Abschlüsse

ohne ZP10		mit ZP10
3 x HS 10		jetzt FOR
2 x FOR		jetzt FOR-Q
2 x FOR-Q		jetzt FOR

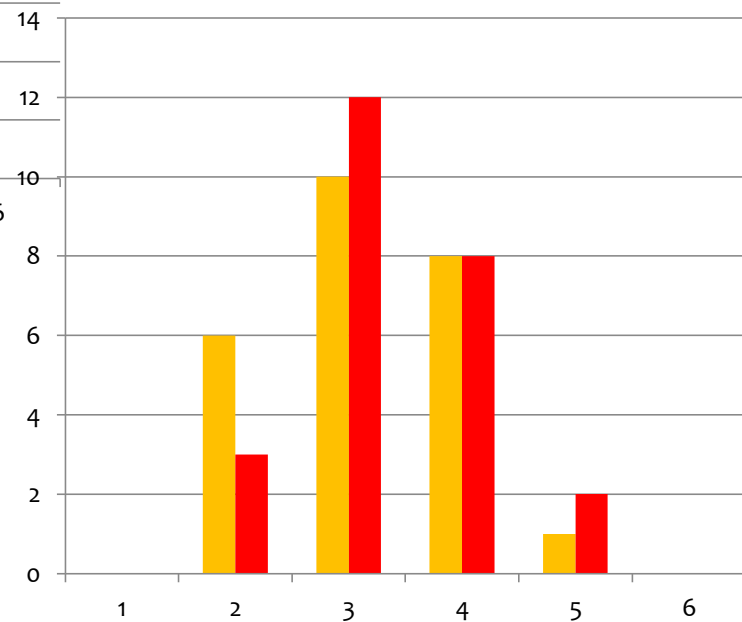
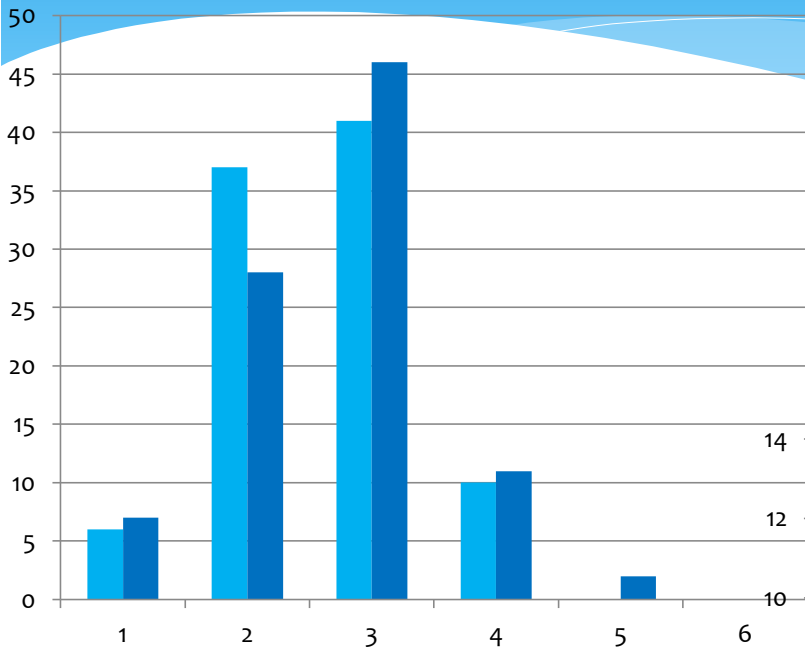
# Abweichungen der Prüfungsnoten von den Vornoten



# Wie haben die Lehrerinnen und Lehrer bei einer Note Abweichung entschieden?

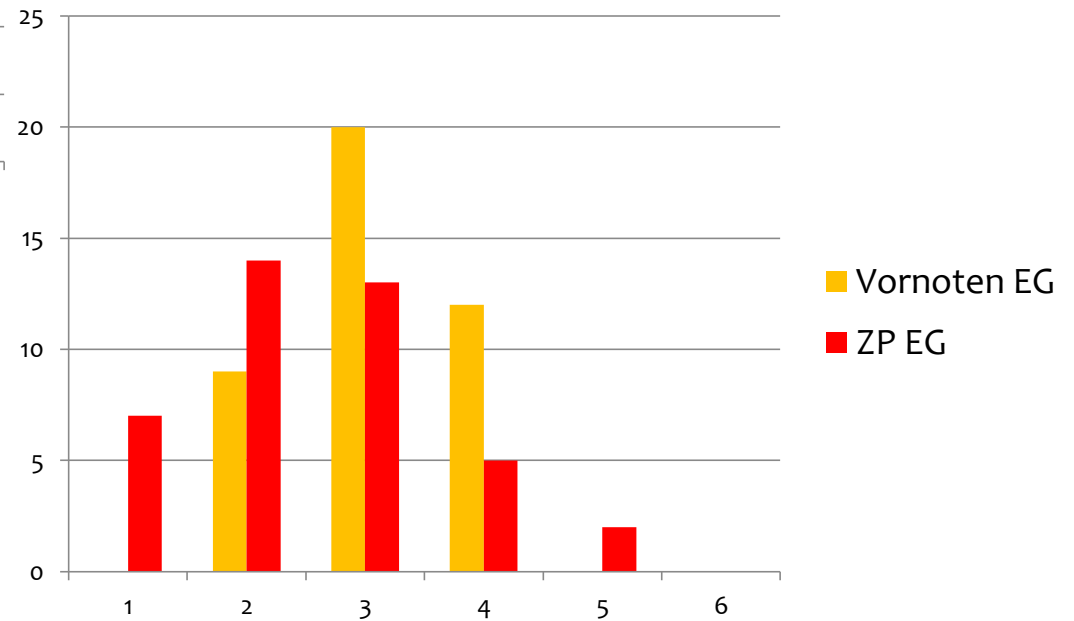
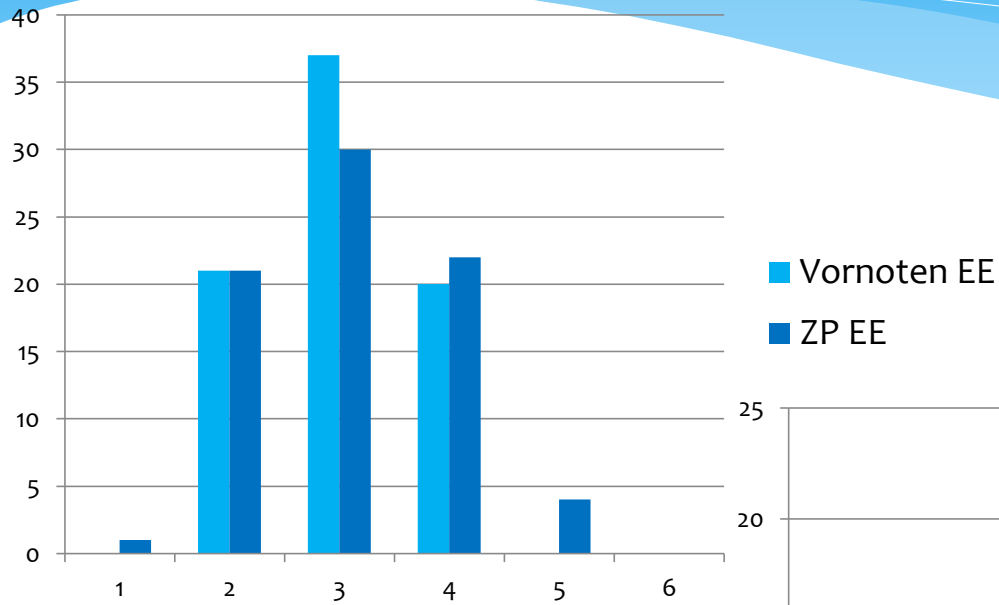


# Deutsch

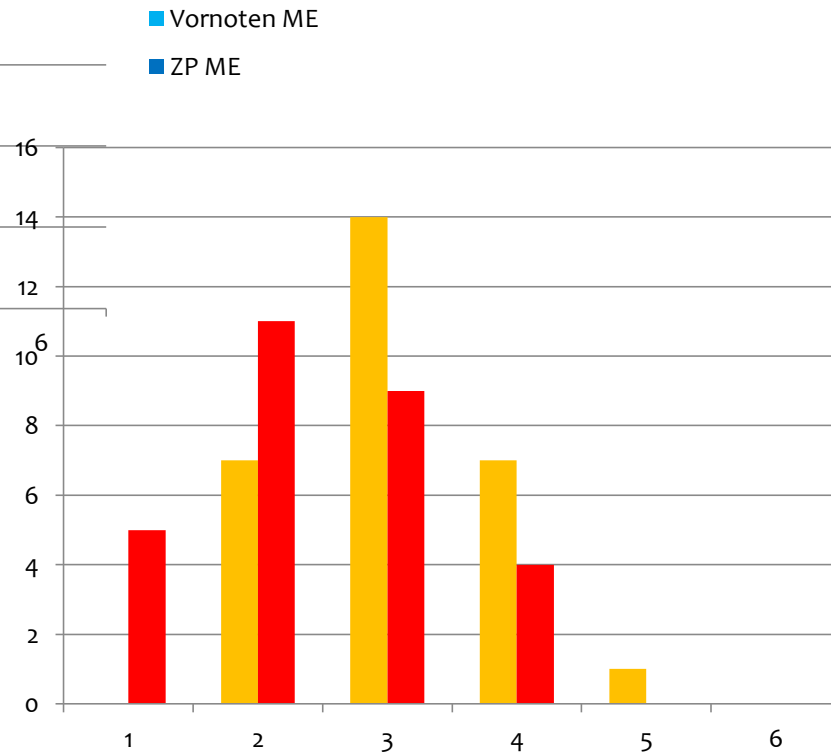
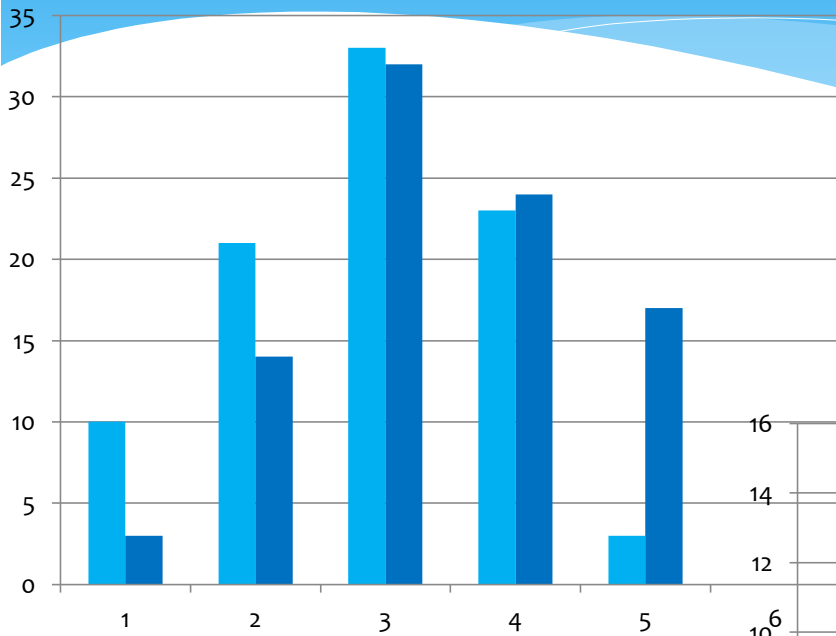


■ Vornoten DG  
■ ZP DG

# Englisch

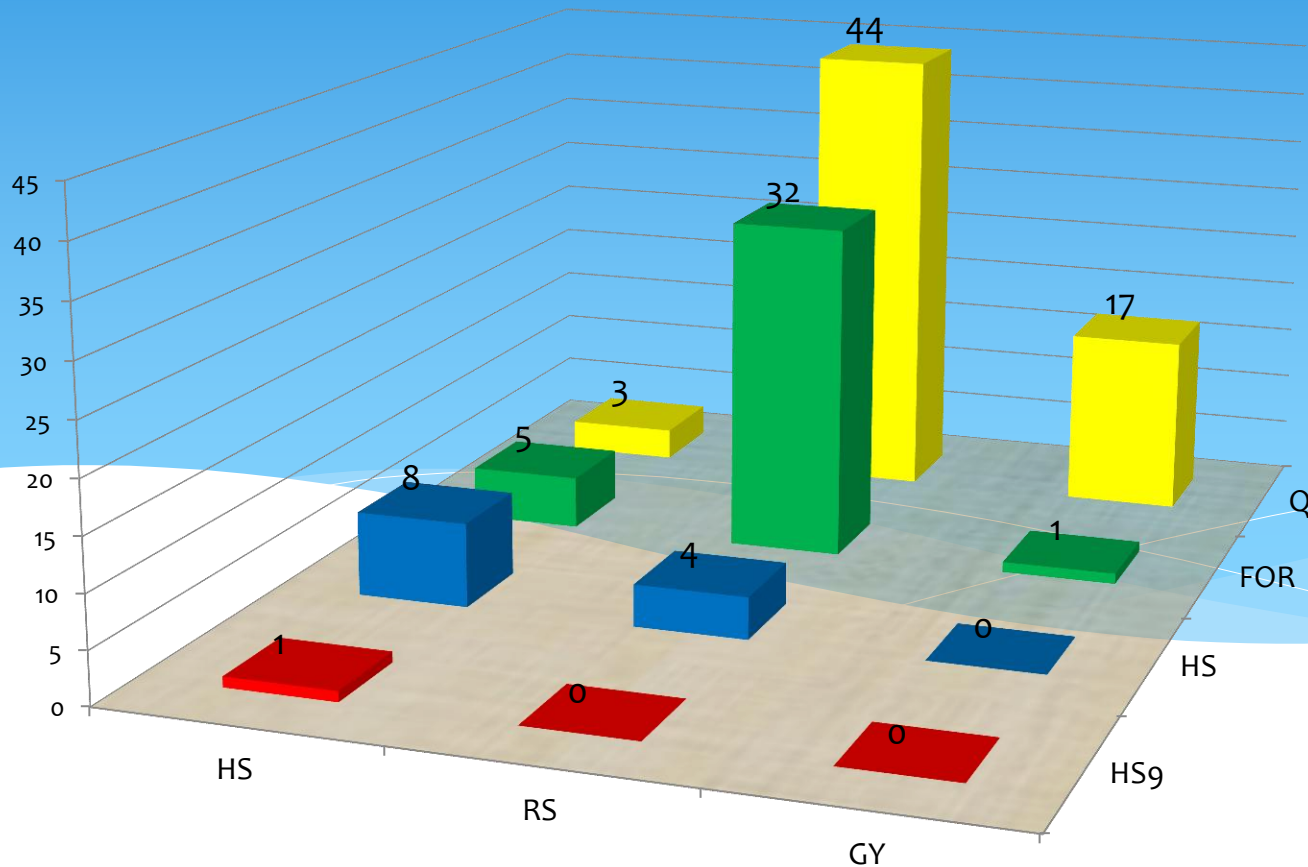


# Mathematik





# Abschlüsse in Relation zu den Grundschulprognosen



# Abschlüsse in Relation zu den Grundschulprognosen - 2

